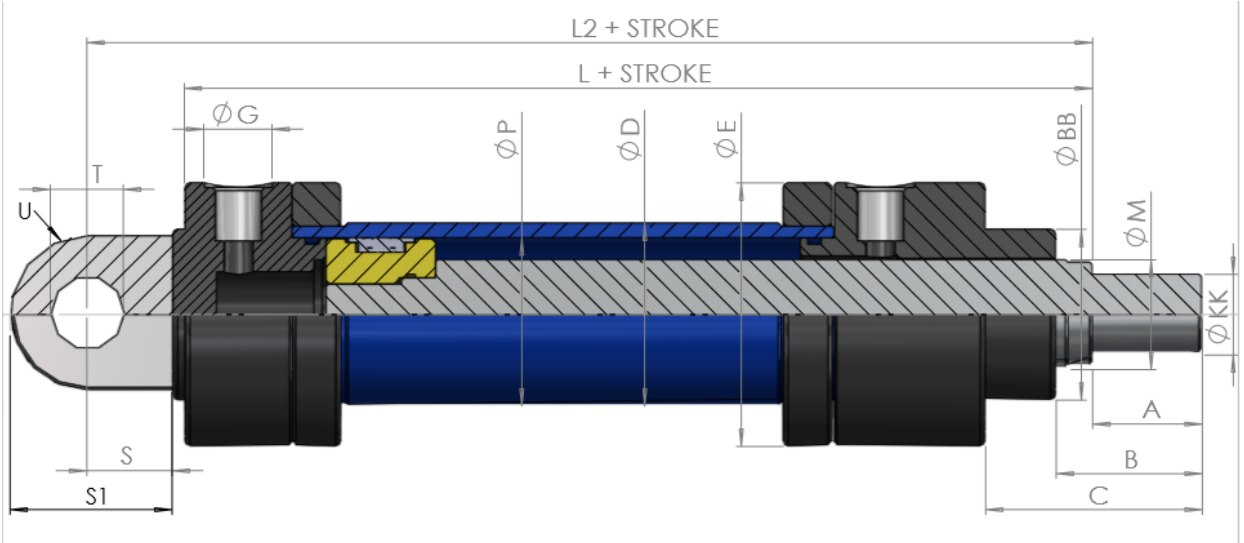
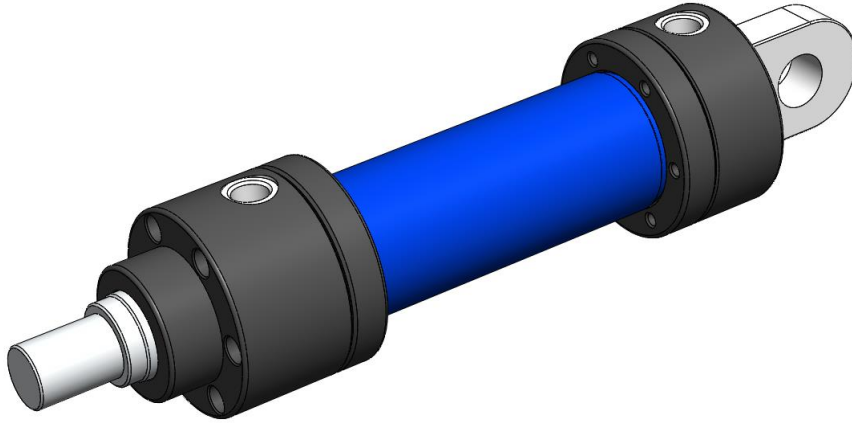


# CETOP R58 H/ISO 6020/1

Çift tesirli hidrolik silindir KS370 D serisi (normal milli)



ØP	Ø25	Ø32	Ø40	Ø50	Ø63	Ø80	Ø100	Ø125	Ø140	Ø160	Ø180	Ø200
M	14	18	22	28	36	45	56	70	80	90	100	110
A	16	18	22	28	36	45	56	63	75	85	90	95
B	29	31	35	42	52	63	76	86	100	110	120	125
C	44	50	54	66	81	99	113	123	140	151	165	170
BB	32	40	50	60	70	85	106	132	145	160	185	200
D	35	40	50	60	75	95	115	145	160	180	210	245
E	58	68	78	98	108	129	158	186	210	240	255	296
G	R1/4	R1/4	R3/8	R1/2	R1/2	R1/2	R3/4	R3/4	R3/4	R1	R1	R1
KK												
L	162	186	202	221	239	272	300	325	360	370	425	450
L2	178	206	227	253	279	354	395	428	485	505	580	615
S	16	20	25	32	40	82	95	103	125	135	155	165
S1	32	40	50	64	80	132	158	174	210	225	257	277
T	12	16	20	25	30	40	50	60	70	80	90	100
U	12	16	20	25	32	40	50	63	70	80	90	100